

IRT SNMP GUI SETUP



User Manual

Revision History:

Revision	Date	By	Change Description	Applicable to:
01	16/10/2009	AL	Original Issue.	IRT SNMP Browser
02	06/08/2018	AL	Upgraded to I.R.T. Communications company name.	IRT SNMP Browser

Table of Contents:

Section	Page
Revision History	2
Setting Up the IRT SNMP Program	4
Working with IRT SNMP	5
Interrogating a Frame	6

This instruction book applies to IRTsnmpBrowser Program.

Setting Up the IRT SNMP Program

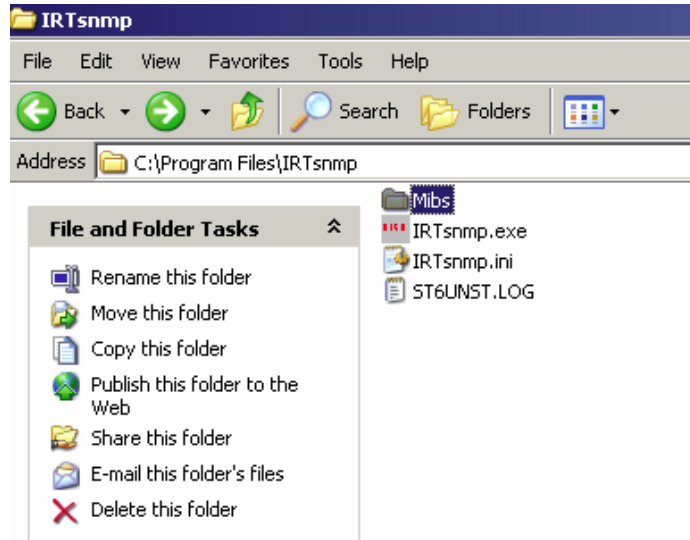
Step 1:

Click Setup.exe and follow the prompts



Step 2:

In the directory where the program has been loaded go to the MIBs Folder and place all the IRT MIBs in that Folder.



Working with IRT SNMP

Start IRT Snmp Software and Setup the Frame

Step 1: Ensure MIBs are loaded correctly

Click MIBs and you should see the MIBs listed as per figure below.

OID	Name	Syntax	Access	Description
132	43.6.1.4.1.16557.3.20	it4004DVA	6	0
133	43.6.1.4.1.16557.3.20.1	it4004InputPresent	16	1 An indication that an input signal is present.
134	43.6.1.4.1.16557.3.20.2	it4004AmplifierPolarity	16	1 An indication of whether the amplifier will or will not invert the input signal. The amplifier can be comr
135	43.6.1.4.1.16557.3.20.3	it4004SnmpAmplifierPolarit	16	2 An indication of the state of the SNMP command to Invert the input signal. This command is logical
136	43.6.1.4.1.16557.3.20.4	it4004DataReclockingRate	16	1 In indication of the frequency to which the reclocking circuits have been set by LK3.
137	43.6.1.4.1.16557.3.20.5	it4004Reset	2	2 Writing a 2 to this object will cause the agent to reset.
138	43.6.1.4.1.16557.3.20.6	it4004Trap	16	2 If enabled, Traps will be sent when the input signal is removed or restored.
139	43.6.1.4.1.16557.3.20.7	it4004TrapSeqNo	2	1 A number that increases by one for every trap sent.
140	43.6.1.4.1.16557.3.10	it4006DDA	6	0
141	43.6.1.4.1.16557.3.10.1	it4006Alarms	16	1 The current state of the Urgent Alarm.
142	43.6.1.4.1.16557.3.10.2	it4006InputPresent	16	1 An indication that an input signal is present.
143	43.6.1.4.1.16557.3.10.3	it4006Reset	2	2 Writing a 2 to this object will cause the agent to reset.
144	43.6.1.4.1.16557.3.10.4	it4006Trap	16	2 If enabled, Traps will be sent when an Urgent Alarm occurs. Traps will also be sent when the alarm c
145	43.6.1.4.1.16557.3.55	it4008DDA	6	0
146	43.6.1.4.1.16557.3.55.1	it4008ddaAlarms	16	1 Status of the alarms.
147	43.6.1.4.1.16557.3.55.2	it4008ddaSignalStatus	16	1 Status of the input data signal.
148	43.6.1.4.1.16557.3.55.3	it4008ddaInputLock	16	1 Status of the reclocker. 1. Not locked: Reclocker is unlocked or else signal is not present. 2. Loc
149	43.6.1.4.1.16557.3.55.4	it4008ddaDataRate	16	2 Input data rate for reclocker. 1. ASI/SDI: 270 Mbps 2. STM1-α: 155 Mbps NRZ 3. STM1-ε: 311 M
150	43.6.1.4.1.16557.3.55.5	it4008ddaOutputReclock	16	2 Status of the reclocker. 1. Disabled: Signal routed straight to the outputs. 2. Enabled: Reclocked s

Left Click in a row with Syntax 16 (Enum) to see options.

Step 2: Set-up a frame

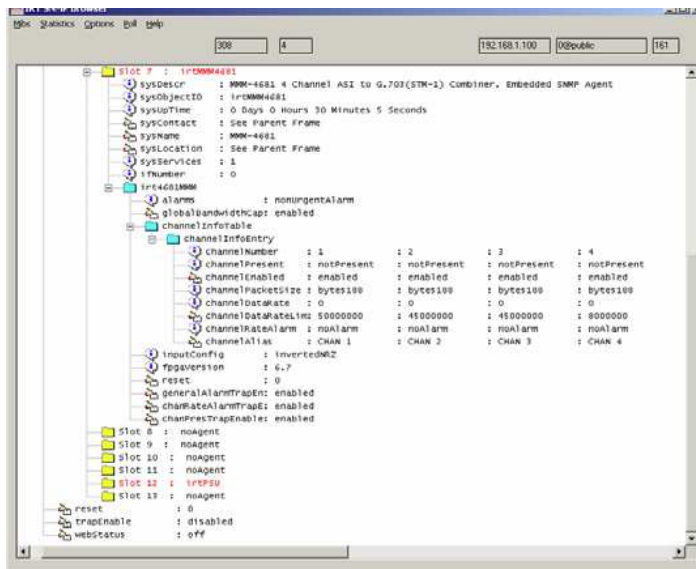
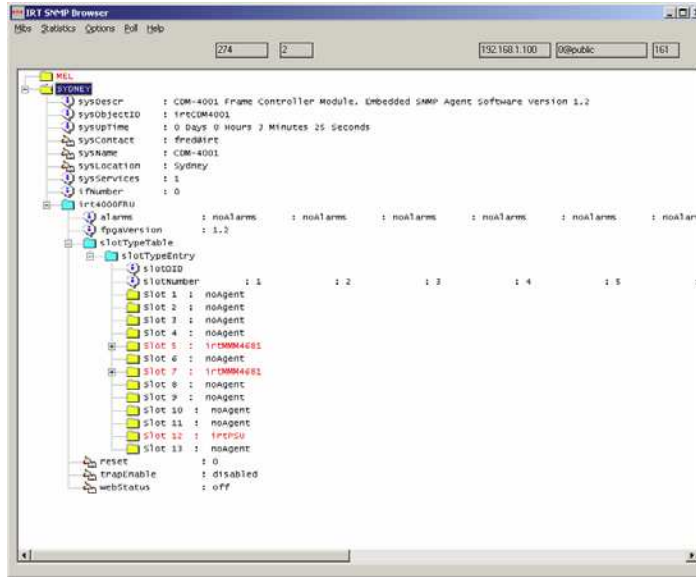
In order to start communicating to a frame the following steps should be followed:

- 1- Options > SNMP Connection Options
- 2- Click on the cell in the Ip address Column and type the relevant CDM-4001 IP address
- 3- Frame name can be changed
- 4- After each modification press Enter
- 5- Save

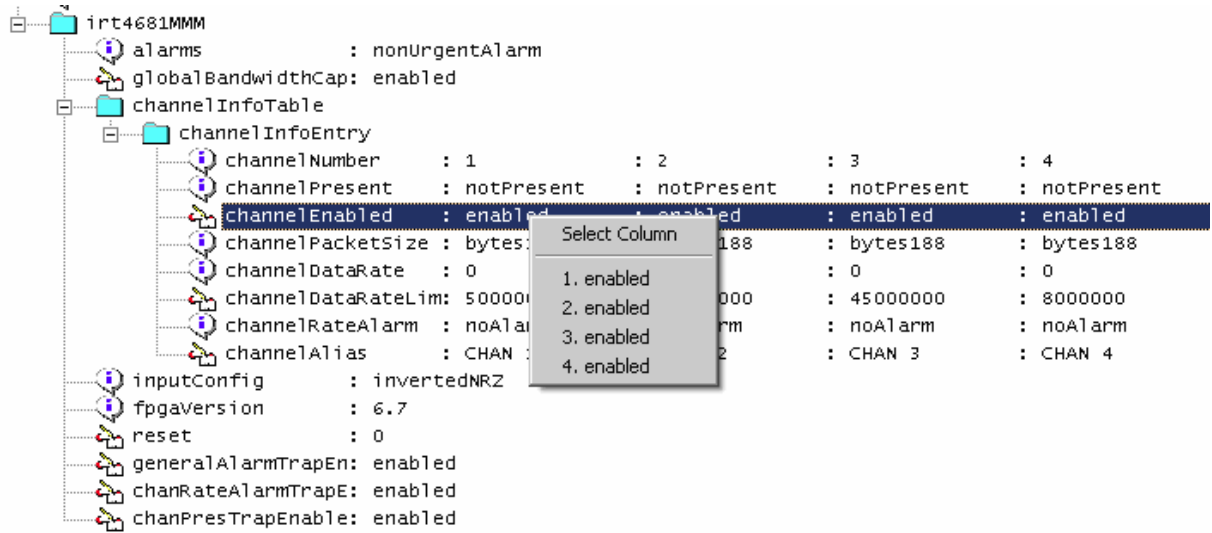
IP Address	Name	Community	Port
192.168.1.100	SYDNEY	0@public	161
192.168.1.100	MEL	0@public	161

Interrogating a Frame

In the main screen any annotation in RED means you can click on it and do modifications.



To change setting double click on the required field to be changed and options will be displayed. Please note a Right Click would give a description of the field.



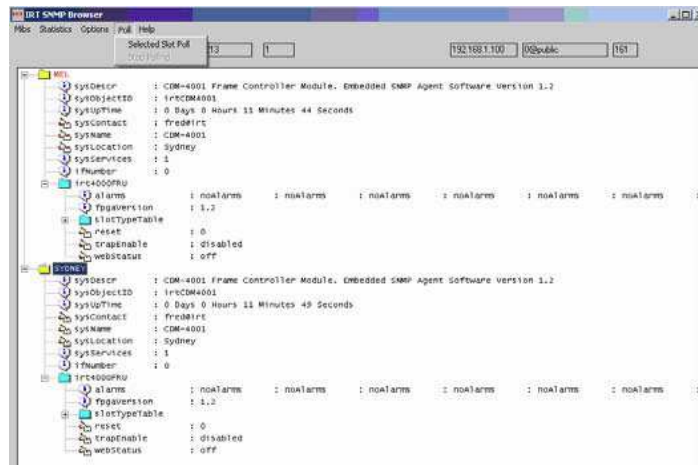
IRTsnmpBrowser

Right Click View

The current state of the Urgent and Non-Urgent busses which are common to all modules.

slotTypeEntry	slotOID	
	slotNumber	: 1
	Slot 1	: noAgent
	Slot 2	: noAgent
	Slot 3	: noAgent
	Slot 4	: noAgent
	Slot 5	: irtMMM4681

To Poll a frame on a regular basis to get updated status: Poll > Selected Slot Poll



IRTsnmpBrowser

Enabling Trap Receiver:

Traps > Traps On

